



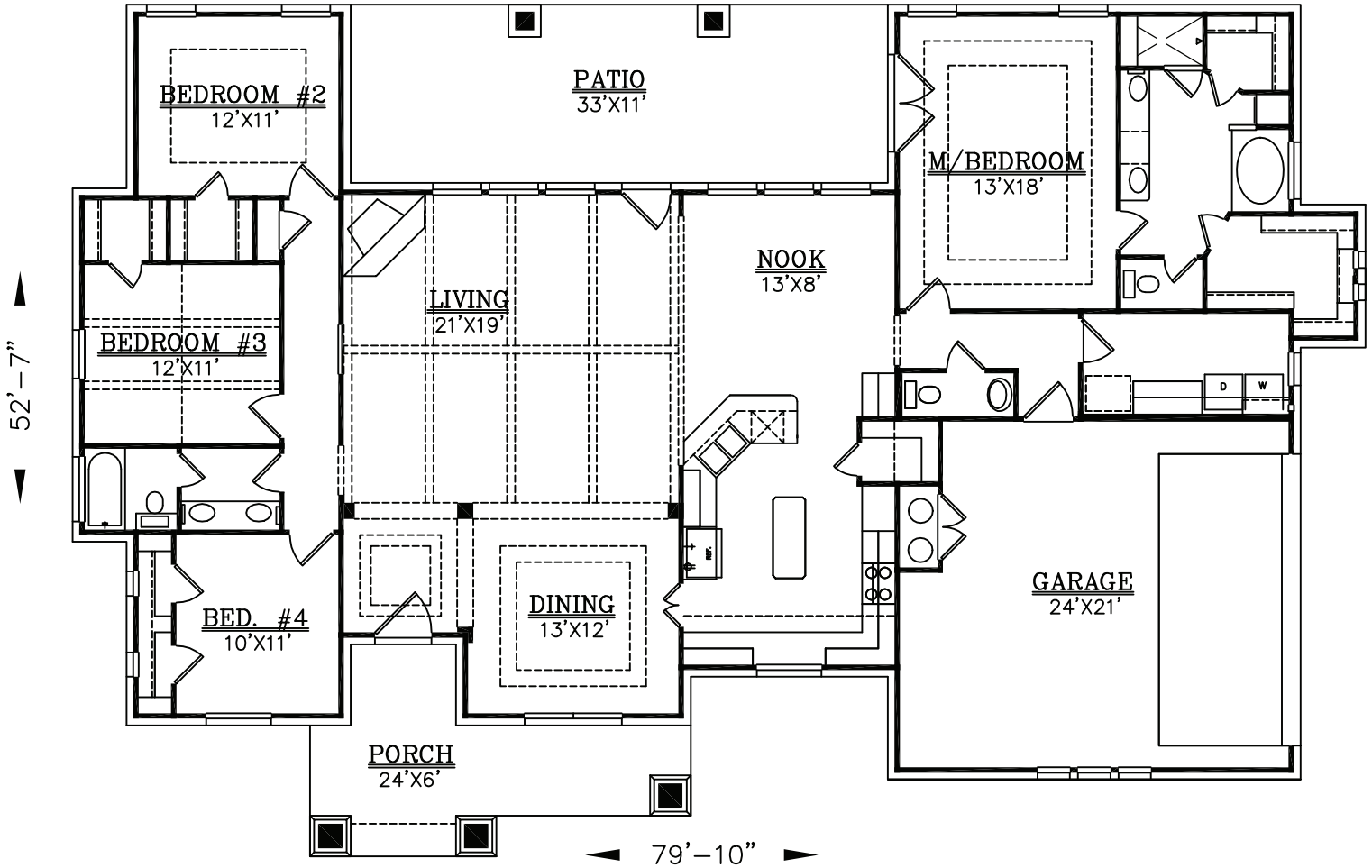
(210)658-9726  
REF. #4446

COPYRIGHT 19 BRIAN SMITH DESIGNERS

DRAWINGS, PLANS AND SKETCHES ARE THE PROPERTY OF BRIAN SMITH DESIGNERS. PURCHASER'S RIGHT IS CONDITIONAL AND LIMITED TO A ONE TIME USE TO CONSTRUCT A SINGLE PROJECT. PRELIMINARY SKETCHES ARE PROHIBITED AS CONSTRUCTION DRAWINGS. UNAUTHORIZED USE OR REPRODUCTION OF THESE PLANS AND SKETCHES ARE STRICTLY PROHIBITED. VIOLATORS WILL BE PROSECUTED.

**SQUARE FOOTAGE:**

LIVING = 2445  
GARAGE = 541  
PATIO = 365  
PORCH = 192



(210)658-9726  
REF. #4446

COPYRIGHT 19 BRIAN SMITH DESIGNERS

DRAWINGS, PLANS AND SKETCHES ARE THE PROPERTY OF BRIAN SMITH DESIGNERS. PURCHASER'S RIGHT IS CONDITIONAL AND LIMITED TO A ONE TIME USE TO CONSTRUCT A SINGLE PROJECT. PRELIMINARY SKETCHES ARE PROHIBITED AS CONSTRUCTION DRAWINGS. UNAUTHORIZED USE OR REPRODUCTION OF THESE PLANS AND SKETCHES ARE STRICTLY PROHIBITED. VIOLATORS WILL BE PROSECUTED.



"We build the house. You make the home."

MGLegacyCustomHomes.com