



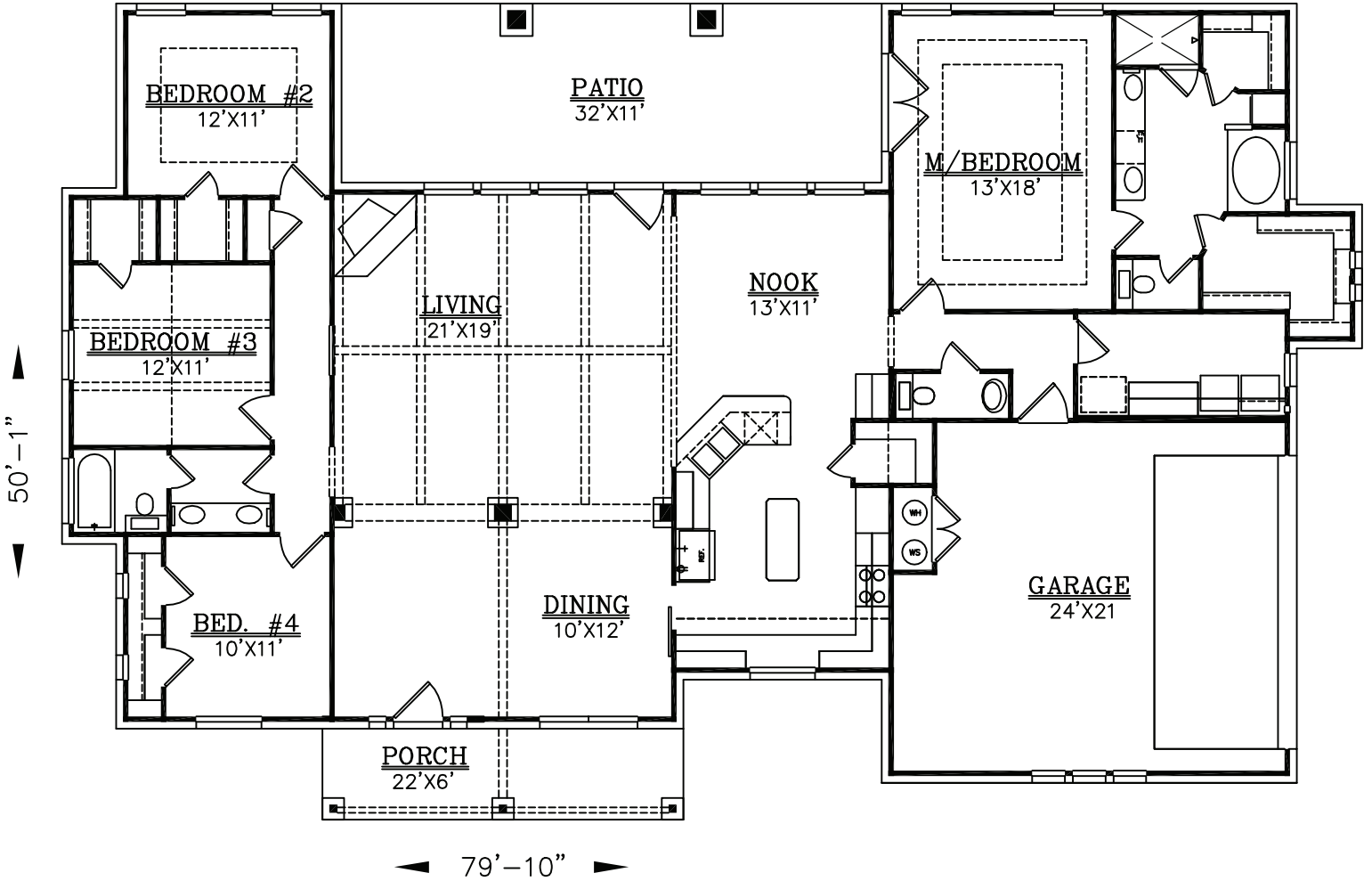
(210)658-9726
REF. #4738

COPYRIGHT 19 BRIAN SMITH DESIGNERS

DRAWINGS, PLANS AND SKETCHES ARE THE PROPERTY OF BRIAN SMITH DESIGNERS. PURCHASER'S RIGHT IS CONDITIONAL AND LIMITED TO A ONE TIME USE TO CONSTRUCT A SINGLE PROJECT. PRELIMINARY SKETCHES ARE PROHIBITED AS CONSTRUCTION DRAWINGS. UNAUTHORIZED USE OR REPRODUCTION OF THESE PLANS AND SKETCHES ARE STRICTLY PROHIBITED. VIOLATORS WILL BE PROSECUTED.

SQUARE FOOTAGE:

LIVING = 2477
GARAGE = 541
PATIO = 365
PORCH = 131



(210)658-9726
REF. #4738

COPYRIGHT 19 BRIAN SMITH DESIGNERS

DRAWINGS, PLANS AND SKETCHES ARE THE PROPERTY OF BRIAN SMITH DESIGNERS. PURCHASER'S RIGHT IS CONDITIONAL AND LIMITED TO A ONE TIME USE TO CONSTRUCT A SINGLE PROJECT. PRELIMINARY SKETCHES ARE PROHIBITED AS CONSTRUCTION DRAWINGS. UNAUTHORIZED USE OR REPRODUCTION OF THESE PLANS AND SKETCHES ARE STRICTLY PROHIBITED. VIOLATORS WILL BE PROSECUTED.

LEGACY CUSTOM HOMES, LLC

"We build the house. You make the home."

MGLegacyCustomHomes.com