

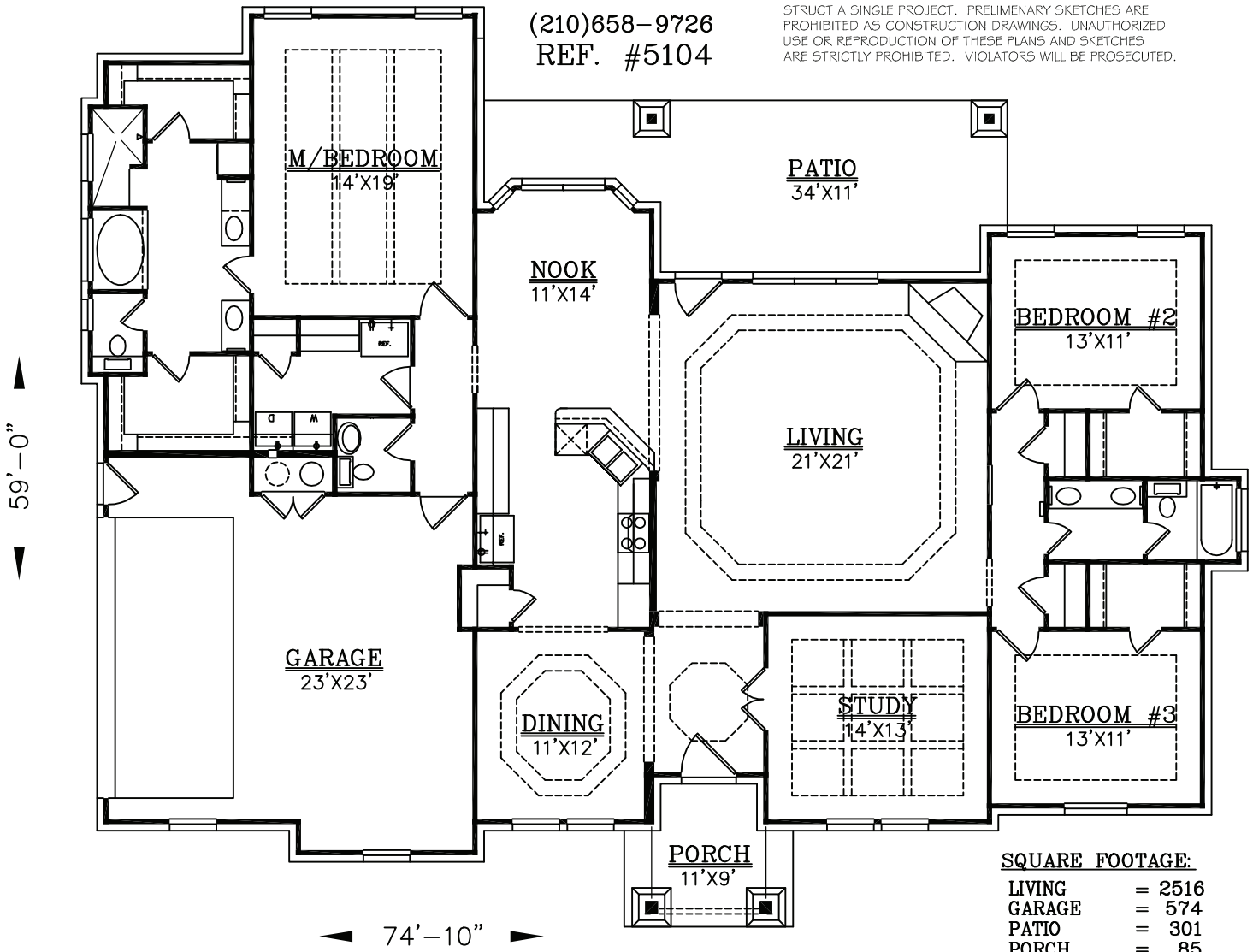


(210)658-9726
REF. #5104

COPYRIGHT 19

BRIAN SMITH DESIGNERS

DRAWINGS, PLANS AND SKETCHES ARE THE PROPERTY OF BRIAN SMITH DESIGNERS. PURCHASER'S RIGHT IS CONDITIONAL AND LIMITED TO A ONE TIME USE TO CONSTRUCT A SINGLE PROJECT. PRELIMINARY SKETCHES ARE PROHIBITED AS CONSTRUCTION DRAWINGS. UNAUTHORIZED USE OR REPRODUCTION OF THESE PLANS AND SKETCHES ARE STRICTLY PROHIBITED. VIOLATORS WILL BE PROSECUTED.



(210)658-9726
REF. #5104

COPYRIGHT 19

BRIAN SMITH DESIGNERS

DRAWINGS, PLANS AND SKETCHES ARE THE PROPERTY OF BRIAN SMITH DESIGNERS. PURCHASER'S RIGHT IS CONDITIONAL AND LIMITED TO A ONE TIME USE TO CONSTRUCT A SINGLE PROJECT. PRELIMINARY SKETCHES ARE PROHIBITED AS CONSTRUCTION DRAWINGS. UNAUTHORIZED USE OR REPRODUCTION OF THESE PLANS AND SKETCHES ARE STRICTLY PROHIBITED. VIOLATORS WILL BE PROSECUTED.



"We build the house. You make the home."

MGLegacyCustomHomes.com